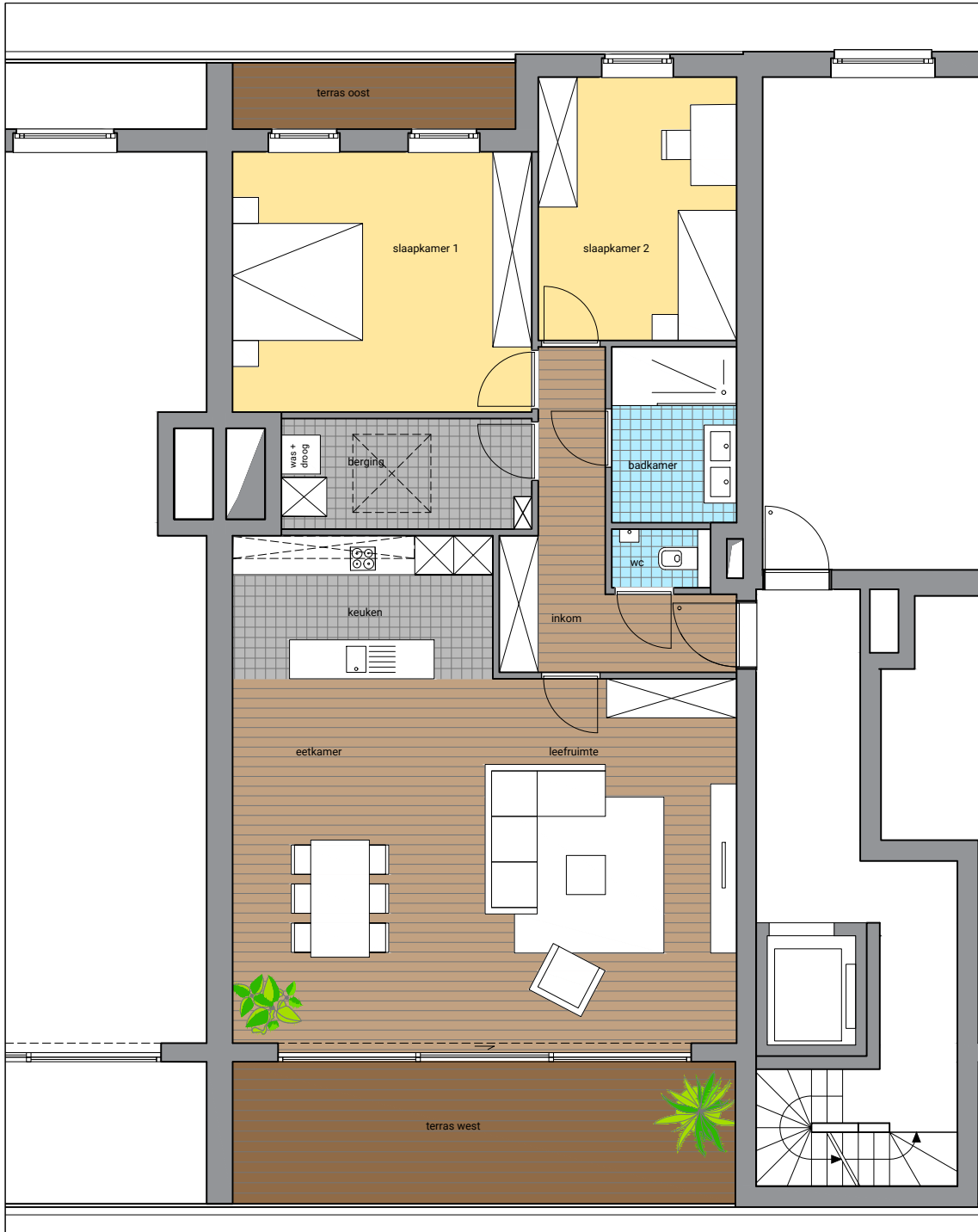
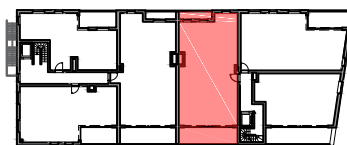


**Groot Park**  
**Sint-André Nieuw**  
 Appartement 1C  
 121,0 m<sup>2</sup> + 21,3 m<sup>2</sup> terras

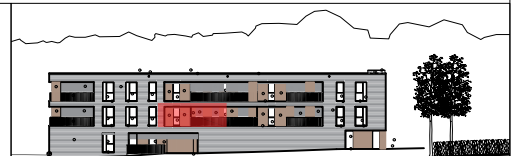


**NETTO OPPERVLAKTE**

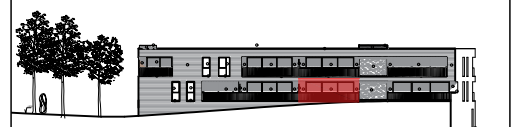
inkom	8,8 m <sup>2</sup>
wc	1,4 m <sup>2</sup>
leefruimte	44,3 m <sup>2</sup>
keuken	8,8 m <sup>2</sup>
berging	6,5 m <sup>2</sup>
slaapkamer 1	18,4 m <sup>2</sup>
slaapkamer 2	12,4 m <sup>2</sup>
badkamer	5,2 m <sup>2</sup>
terras oost	4,4 m <sup>2</sup>
terras west	16,9 m <sup>2</sup>



Grondplan verdieping +1



Oostgevel



Westgevel