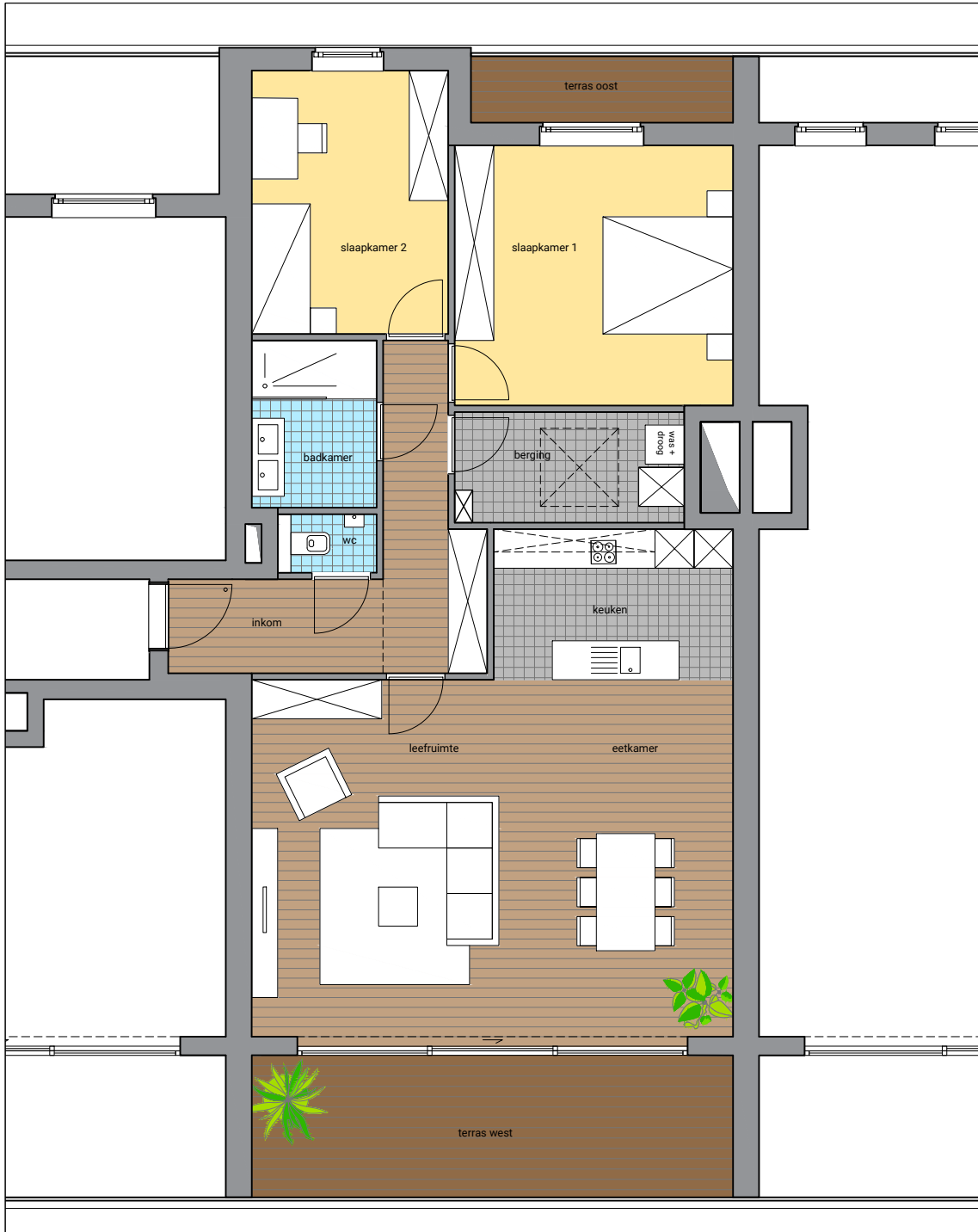


# Groot Park

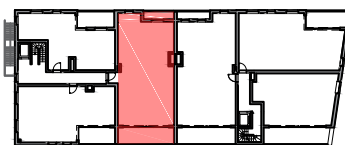
## Sint-André Nieuw

Appartement 1D  
118,8 m<sup>2</sup> + 20,4 m<sup>2</sup> terras

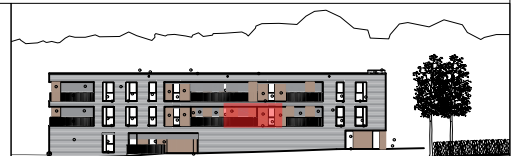


### NETTO OPPERVLAKTE

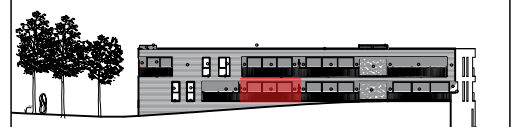
inkom	11,2 m <sup>2</sup>
wc	1,4 m <sup>2</sup>
leefruimte	41,5 m <sup>2</sup>
keuken	8,5 m <sup>2</sup>
berging	6,0 m <sup>2</sup>
slaapkamer 1	17,1 m <sup>2</sup>
slaapkamer 2	12,2 m <sup>2</sup>
badkamer	4,9 m <sup>2</sup>
terras oost	4,2 m <sup>2</sup>
terras west	16,2 m <sup>2</sup>



Grondplan verdieping +1



Oostgevel



Westgevel